



Pixelplasher Batch Smart Layer Replace

a script by Pixelplasher
for Adobe Photoshop CS5-CC 2021
Windows / Mac



FIND IT ON

Adobe Exchange

End User License Agreement (EULA)

You may not distribute, resell or share this extension to your friends, relatives, or strangers. Doing so will discourage further improvement of this extension and support for newer versions of Adobe Photoshop.

You may share this extension to members of your family including parents, brothers or sisters provided that this EULA is read by the recipient.

Installation

Installing with Adobe Creative Cloud

Using **Adobe Creative Cloud** desktop program is the easiest way to install.

Make sure to sign in to Creative Cloud Desktop program using the same account that you purchased this extension with.

Go to the **Marketplace** tab. Click **Manage Plugins** on the left menu if you have already purchased this extension or search for this extension at the search bar on top if not.

Make sure the extension is in the Installed status by clicking **Get** or **Install** button. Proceed to “Final installation steps” section below this page.

Installing from Adobe Exchange

If installing from the zxp file, do not use Adobe Extensions Manager which was discontinued since 2014, to install the zxp file.

Use any of the following Adobe extension installers:

- **Electron Adobe ZXPInstaller**, an open source Adobe extension installer from zxpinstaller.com
- **ExManCmd** command-line tool from Adobe

Final installation steps

You may [watch this video](#) as an easy guide to the next installation steps described below..

After acquiring the extension from Adobe Exchange, installing from Adobe Creative Cloud or the zxp file, navigate to the following folder:

- **Windows**—C:/Users/[Windows Username]/Downloads
- **Mac**--/Downloads

Find the following zip file and extract it:

pixelsplasher-batch-smart-layer-replace_[version.number].zip

Find the following xzp file that was extracted from the zip and install it:

Pixelsplasher-Batch-Smart-Layer-Replace_[version.number].xzp

Verifying the Installation

After acquiring the extension from Adobe Exchange or installing from the xzp file, navigate to the following folder:

- **Windows**—C:/Program Files/Adobe/Adobe Photoshop [Version]/Presets/Scripts
- **Mac**--/Applications/Adobe Photoshop [Version]/Presets/Scripts

And check if the following file were successfully installed in the “Pixelsplasher Scripts Only” folder:

- [folder] Pixelsplasher Scripts Only
- Replace Smart Content.jsx

If the files that should have been installed are missing, manually extract them from the xzp by the following ways:

- Rename the .xzp file extension to .zip and open the file with the associated zip extraction program
- Right click the xzp file and open with any zip extraction program like 7zip or Winrar

Then copy the extracted files or extract directly to the Presets > Scripts directory.

For Adobe Photoshop CS5 to CS6, copy “Replace Smart Content-CS6.jsx” instead of “Replace Smart Content.jsx”.

Installing from Zip

If you received this extension directly from Pixelsplasher in a zip file, extract the aforementioned files to the same location mentioned in “Verifying the Installation”.

How To Use

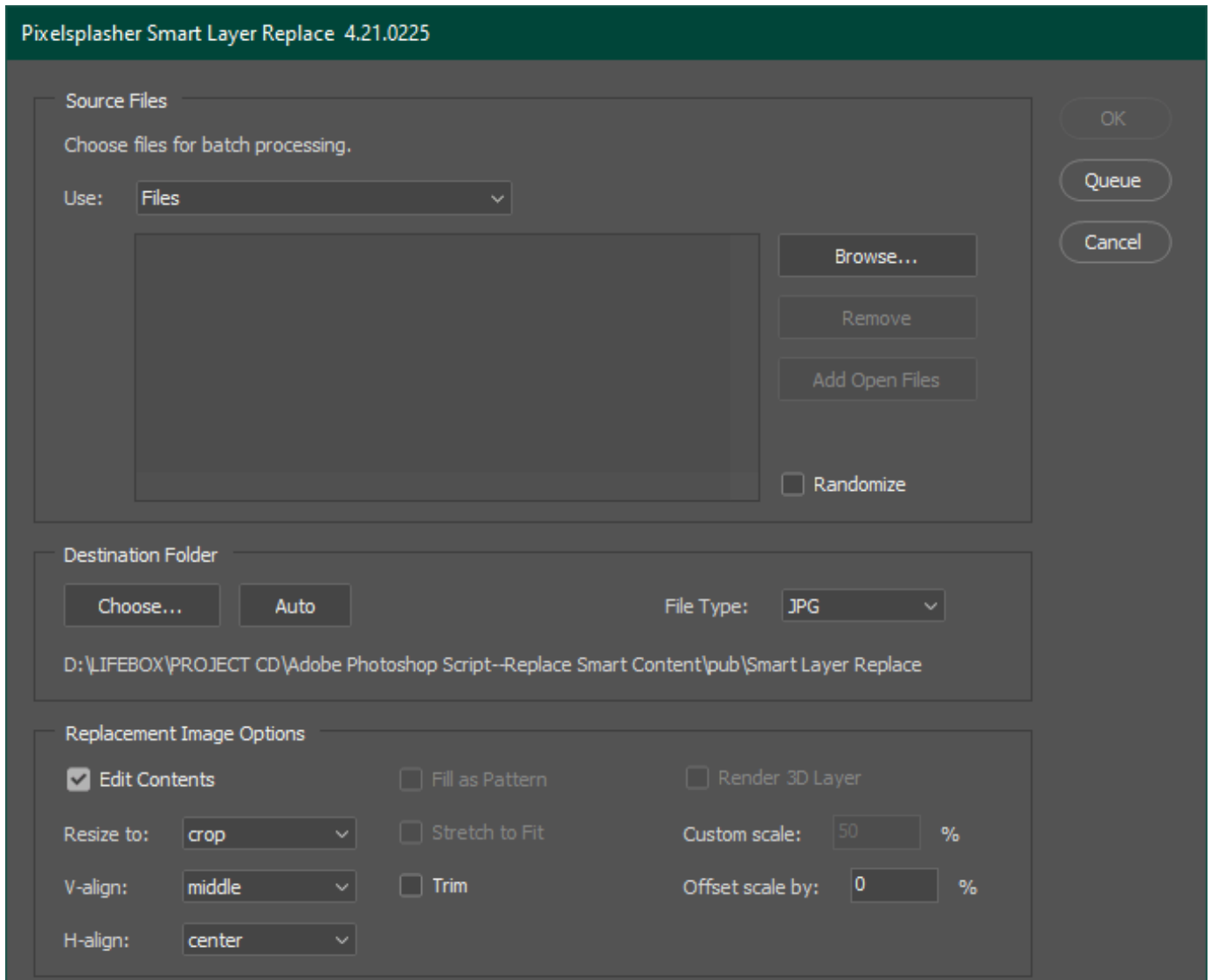
To access the Smart Layer Replace, select a smart layer, then click on the menu:

Adobe Photoshop CC: **File** > **Export** >

Adobe Photoshop CS: **File** > **Automate** >

Then:

Smart Layer Replace...



Adding Replacement Images

There are three ways to add replacement files.

- Select **Files** in the Use: dropdown menu > Click **Browse** button. By holding the Shift key you can select a range of files. By holding the Ctrl key, you can click select files or square-select files incrementally. Your last browsed folder will be remembered.
- Select **Folder** in the Use: dropdown menu > Click **Browse** button. This will load all valid image files that are inside the folder that you select. The starting view is always the whole computer drives list.
- Click **Add Open Files** button. This will load all other files that are currently open in Photoshop.

The **Randomize** option is useful if you are combining one or more replacement images in other smart layers with the same set of replacement images, randomly pairing or mixing them all up in each export.

Destination Folder

The destination folder that you set is always remembered. There are two ways to set the folder where to save the exported files.

Custom. Clicked the **Choose...** button and browse to the folder location where you want to save your files after smart layer replacement. If you wish to restore the destination location to the automatic location described below, click the **Auto** button which changes to **Undo** button if you wish to undo the action.

Automatic. If you have not clicked the **Choose...** button and selected an output destination folder in your computer, the output files will be saved to a sub-directory of the PSD file that you are working on. The output folder will be named

- /placed in [PSD file name]

Replacement Image Options

Replacement Methods

Edit Contents. If Edit Contents is checked which is the default, smart layer content is replaced equivalent to using the following menu actions:

Layer > Smart Objects > Edit Contents...

With this method, the linked or embedded smart layer is opened and edited directly and replacement is made in the smart layer document. This is the best method of replacement for smart layers with warp transforms applied.

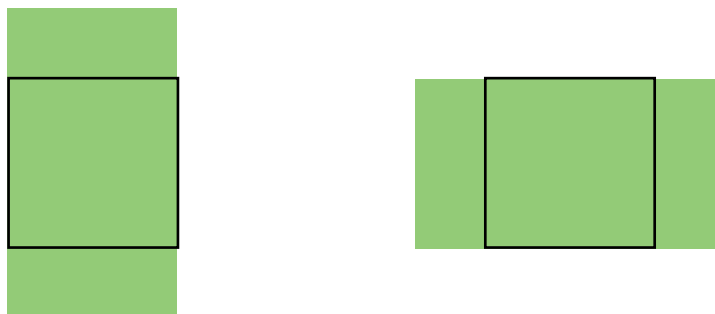
Replace Contents. If Edit Contents is unchecked, smart layer content is replaced equivalent to using the following menu actions:

Layer > Smart Objects > Replace Contents...

This is a faster method of replacement for smart layers with simple transforms applied. If this method is used on smart layers with warp or perspective transforms, the replacement image may not properly fill the original space occupied by the previous content due to aspect ratio and size difference.

Resize Methods

Crop. The replacement image is cropped in order to fill 100% of the original space occupied by the smart layer content while maintaining aspect ratio.



Fit. The width and height of the replacement image are contained to best fit the original space occupied by the smart layer content while maintaining aspect ratio. Some unfilled space may show the layer behind the replacement image.



See the difference between crop and fit in this video:

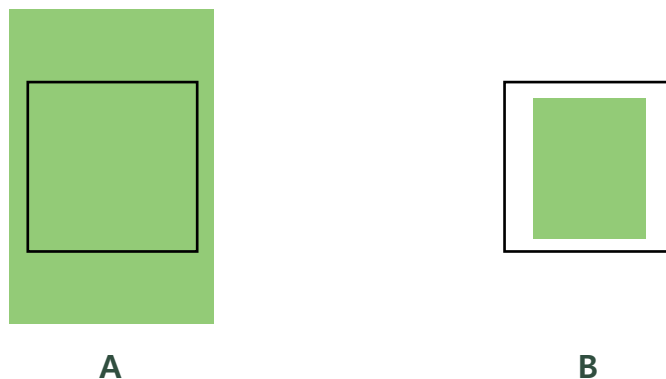
<https://www.youtube.com/watch?v=9tPqp7UGuUs>

An option for **Stretch to Fit** is available if you wish to fit both height and width without keeping the original aspect ratio. This may cause the replacement image to look stretched or pinched.

Custom. By default, the replacement image is transformed to 100% of its original placement size. You can change the **Custom scale** value to above or below 100%. Negative values are accepted. This will invert the replacement image both horizontally and vertically!

Offset Scale

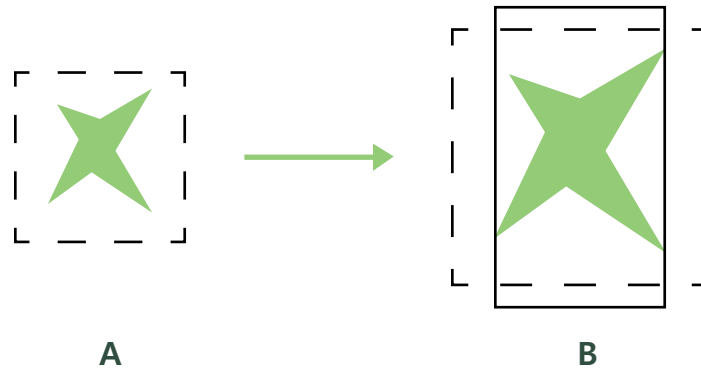
Offset scale is 0% by default. This is the amount of additional scaling percentage that you may want applied to the replacement image. This is useful for filling unwanted spaces left out by smart layer content with warp or perspective transform applied, which may occur if **Edit Contents** is unchecked. Negative values are accepted. This will result in the image resizing to less than the overall size of the original space occupied by the smart layer content.



A. Crop resize with a 10% offset scale. **B.** Fit resize with a -10% offset scale.

Trim

Trim is only useful if your replacement image has transparent margins around the artwork and you wish to fit the image without including the transparent areas.



A. Artwork with transparent space around it. **B.** Placed with with crop and trim options, effectively trimming out transparent areas.

Trim is also useful with the **Tile as Pattern** option, ensuring that straight edge gaps between each image tile do not appear where a full width and height pixel fill is desired.

Fill as Pattern

When enabled, the replacement image is repeated horizontally and vertically as a tile pattern, filling up any remaining space in the smart layer. This option is available when the Fit or Custom resizing option is chosen, when the resulting transformation may leave unfilled spaces in the smart layer.

Only the Edit contents mode of replacement is used to pattern fill the smart layer. The resulting pattern fill is aligned to the original size and center position of the replacement image after resize.

CAUTION: A new pattern is created in the **Patterns** panel each time an image replacement with this option enabled is made. The name of the pattern follows the following format:

[replacement image filename] [size in percent]%

Each round of replacements creates a new folder or subfolder with the file-name of the Photoshop document as the folder name. To avoid filling up the **Patterns** panel, remember to delete the pattern folder and subfolders. You might want to export the newly created pattern

set first before deleting.

Positioning Methods

V-Align. You have the option to vertically align the replacement image top side to the top edge of the smart layer space, the middle point to the center, or the bottom side to the bottom edge.

H-Align. Similar to V-Align but horizontally oriented alignment options for the replacement image left side to the left edge of the smart layer space, the center point to center, or the right side to the right edge.

Rendering 3D Layers

If you have selected a 3D layer and have the 3D Layer add-on (sold separately) installed, the **Render 3D Layer** option is available. This will enable rendering of the 3D object after replacement of its image texture is done and before the PSD is exported.

Action Buttons

OK

The **OK** button is enabled only if there is at least one input image available in the file list box. Clicking **OK** will run the script and apply the files included in the file list box.

Cancel

The **Cancel** button closes the script dialog and no other actions are taken.

Queue

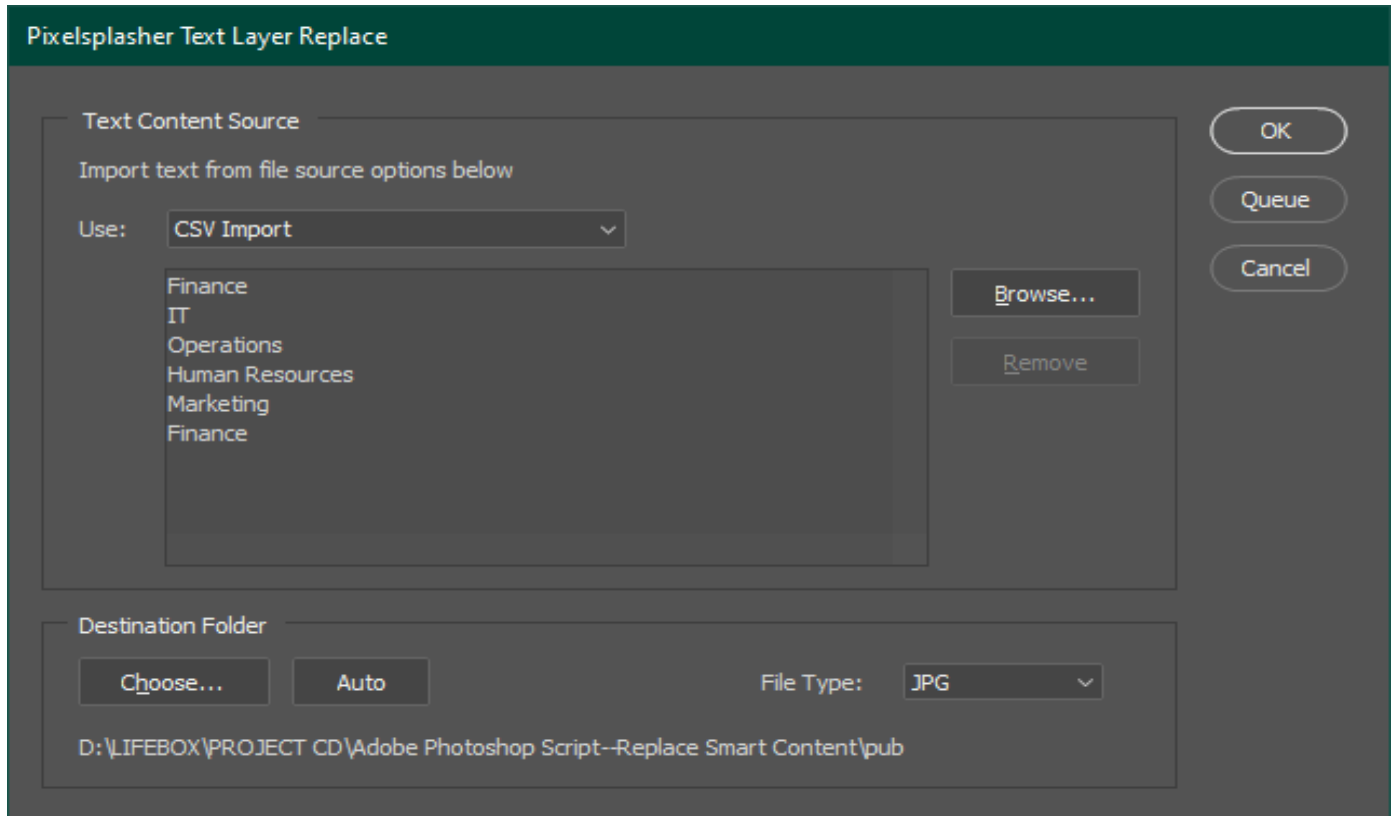
The **Queue** button saves the current input files and closes the Pixelsplasher Batch Processor dialog box. You will need the Job Queue add on script installed to save the current input files and associated settings as a job to be run later in series with other Smart Layer Replace jobs. This will allow you to make smart layer replacements on multiple contents at a time.

If the Job Queue add on script is not installed, an information dialog will be displayed.

Pixelplasher Batch Text Layer Replace

Coming soon to Adobe Exchange/PS\$9

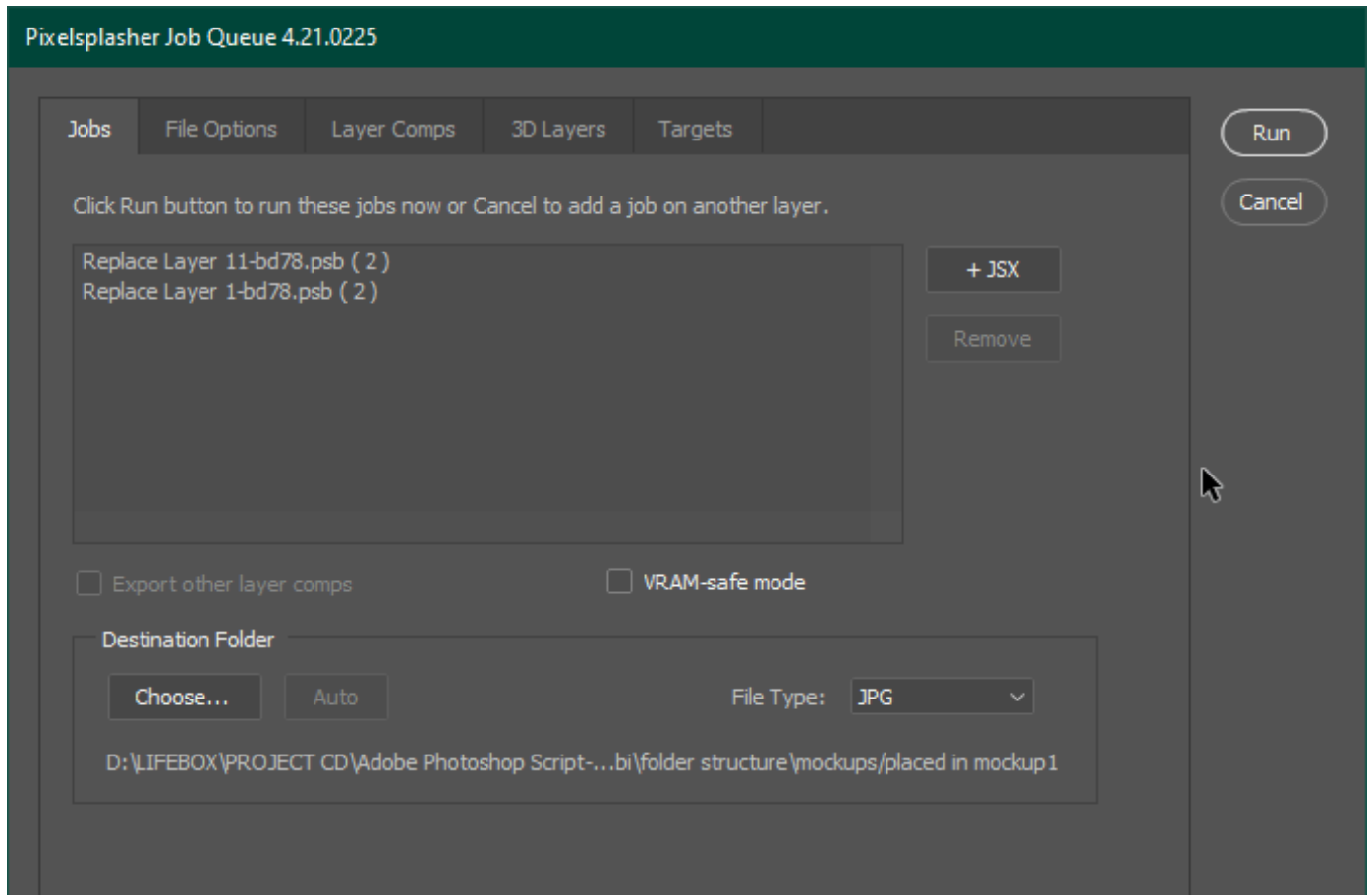
If you need to replace text layers instead of or along with smart layers, you will need to purchase Pixelplasher Batch Text Layer Replace. It works together with Smart Layer Replace with the same add-ons compatibility. It can also work as a standalone text-only replacer without need for Smart Layer Replace to be installed and can still use the same add-ons.



For more details, please visit https://www.pixelplasher.com/_downloads/scripts/batch-text-replacer-script-for-adobe-photoshop/.

Other Add-Ons

Prices are indicated as \$Adobe Exchange price/**P**\$Direct-to-author price payed via Paypal.
Example: \$9/**P**\$7



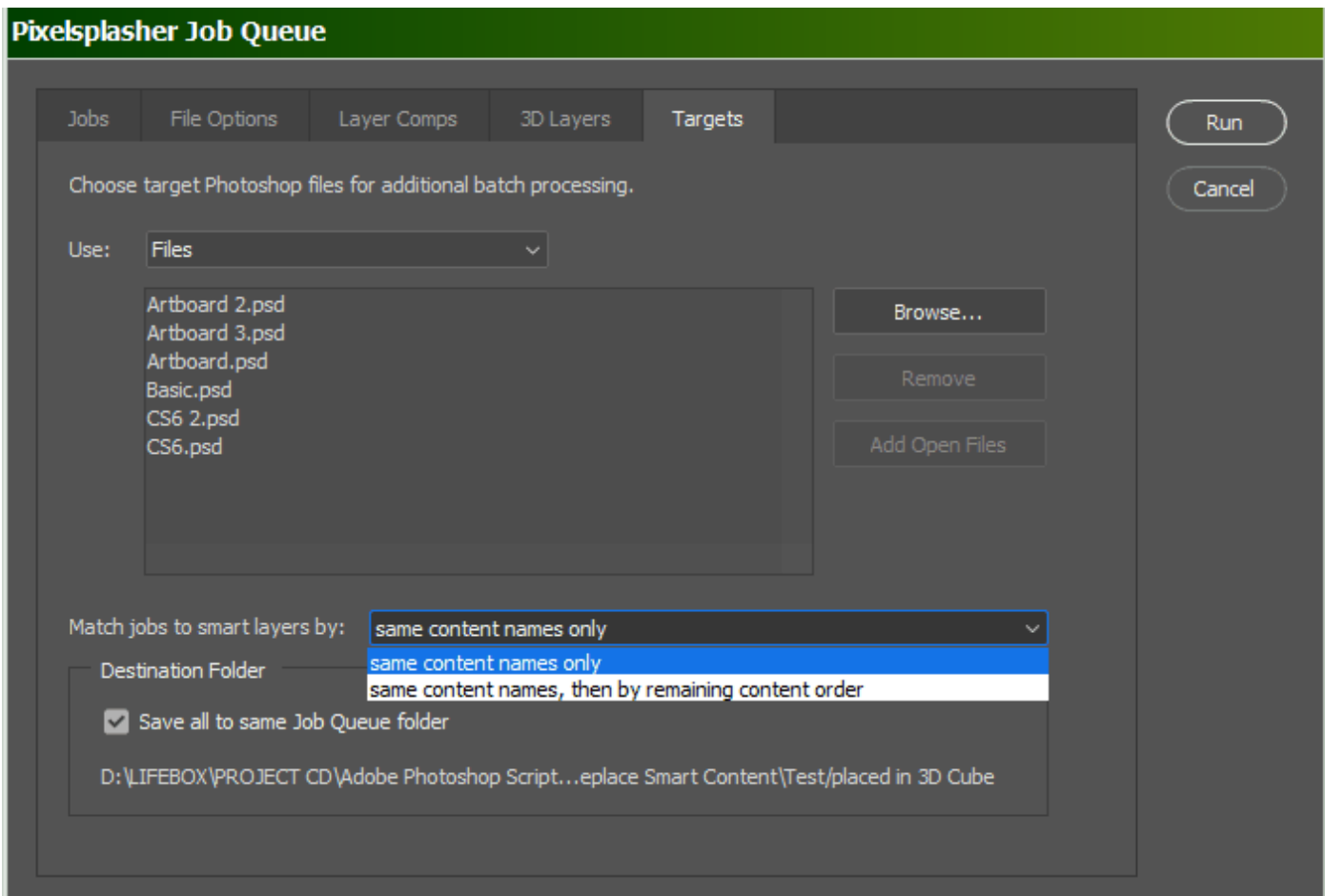
Job Queue Add-On

\$9/P**\$7**

This is an add-on script that is sold separately and is where the Job Targets add-on is integrated with. All replacement jobs in the job queue are applied by Job Targets to all target PSD files. With the Job Queue add-on, it is possible to have several smart layer replacements made in each PSD target.

Job Queue has an option to separately export each layer comp in the PSD.

Job Queue demo: https://www.youtube.com/watch?v=He_dmvHEphc

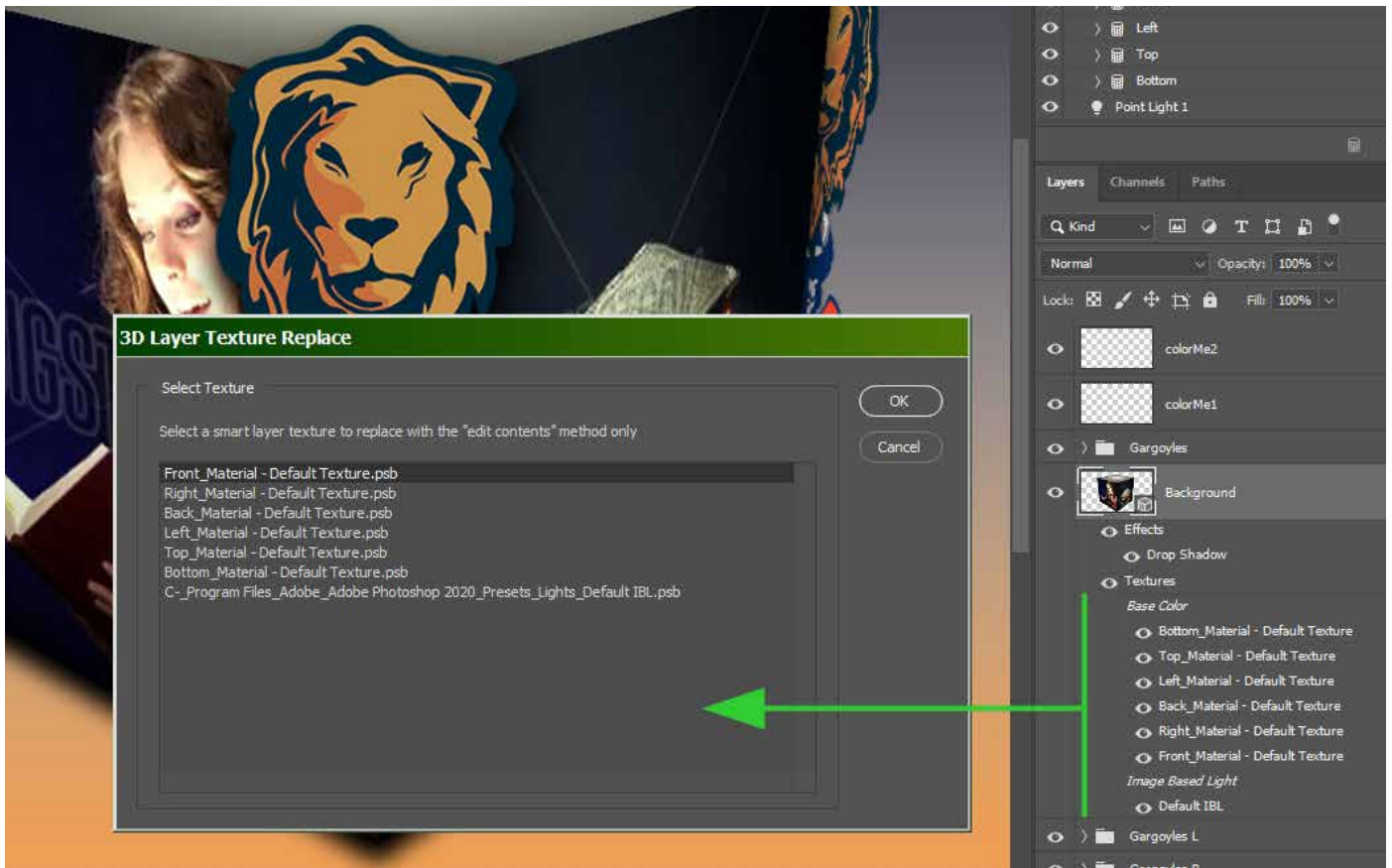


Job Targets Add-On

\$7/P\$5

This is a tab in the Job Queue window where you can load PSD and PSB files to apply the replacement jobs to, in addition to the starting open document where the script is running. You have the option to match the target smart layer contents with the replacement jobs' target smart layers only, or in addition to that, apply replacement jobs that have no matching smart layer content in the target file to any remaining available smart layers.

Job Targets demo: <https://www.youtube.com/watch?v=a4XETqBEMQ8>

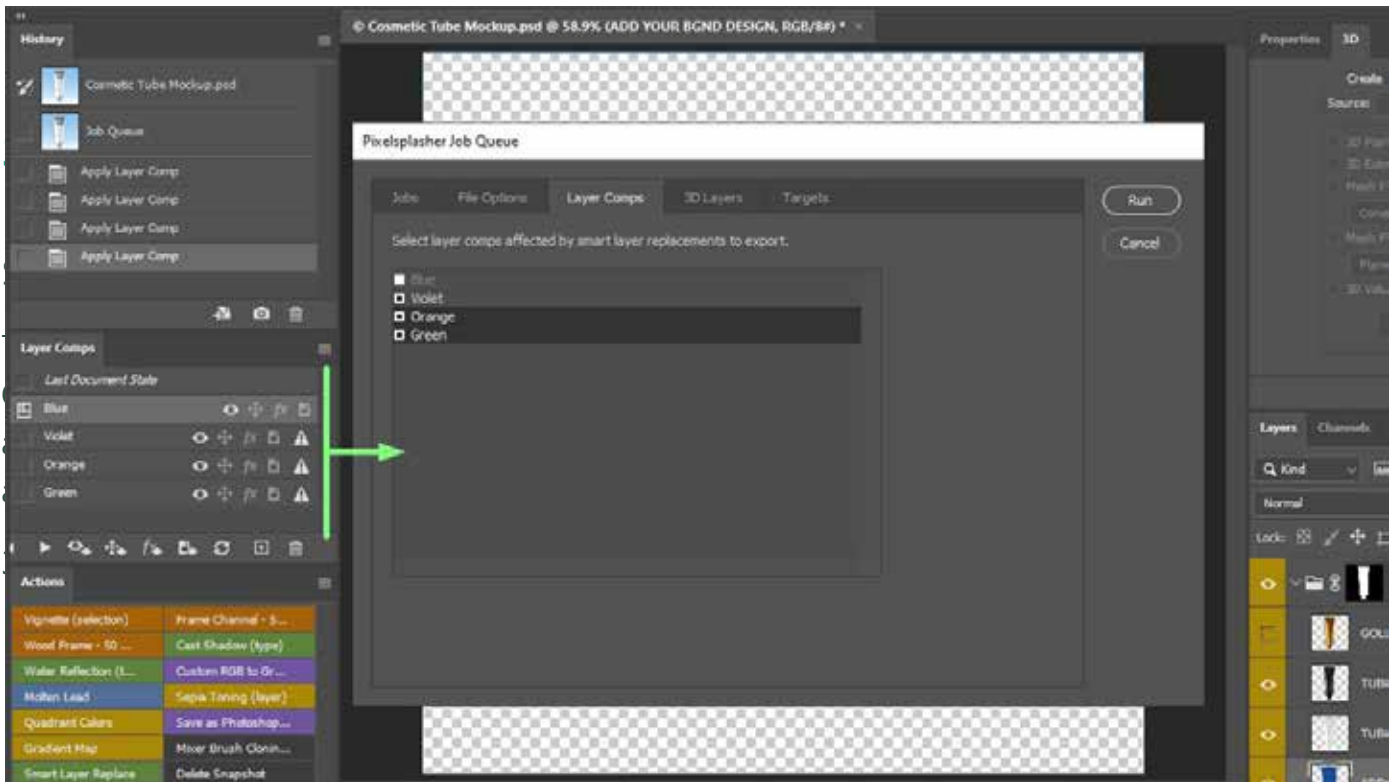


3D Layer Add-On

\$9/P\$7

The 3D Layer add-on gives the ability of the Smart Layer Replace extension as well as the Job Queue add-on to replace smart layers found in texture layers of 3D objects. The extension is able to scan the 3D layer for textures and let you choose which one to replace. You can select another texture later and queue it in Job Queue.

3D Layer add-on demo: <https://www.youtube.com/watch?v=4GN2qys0RqM>

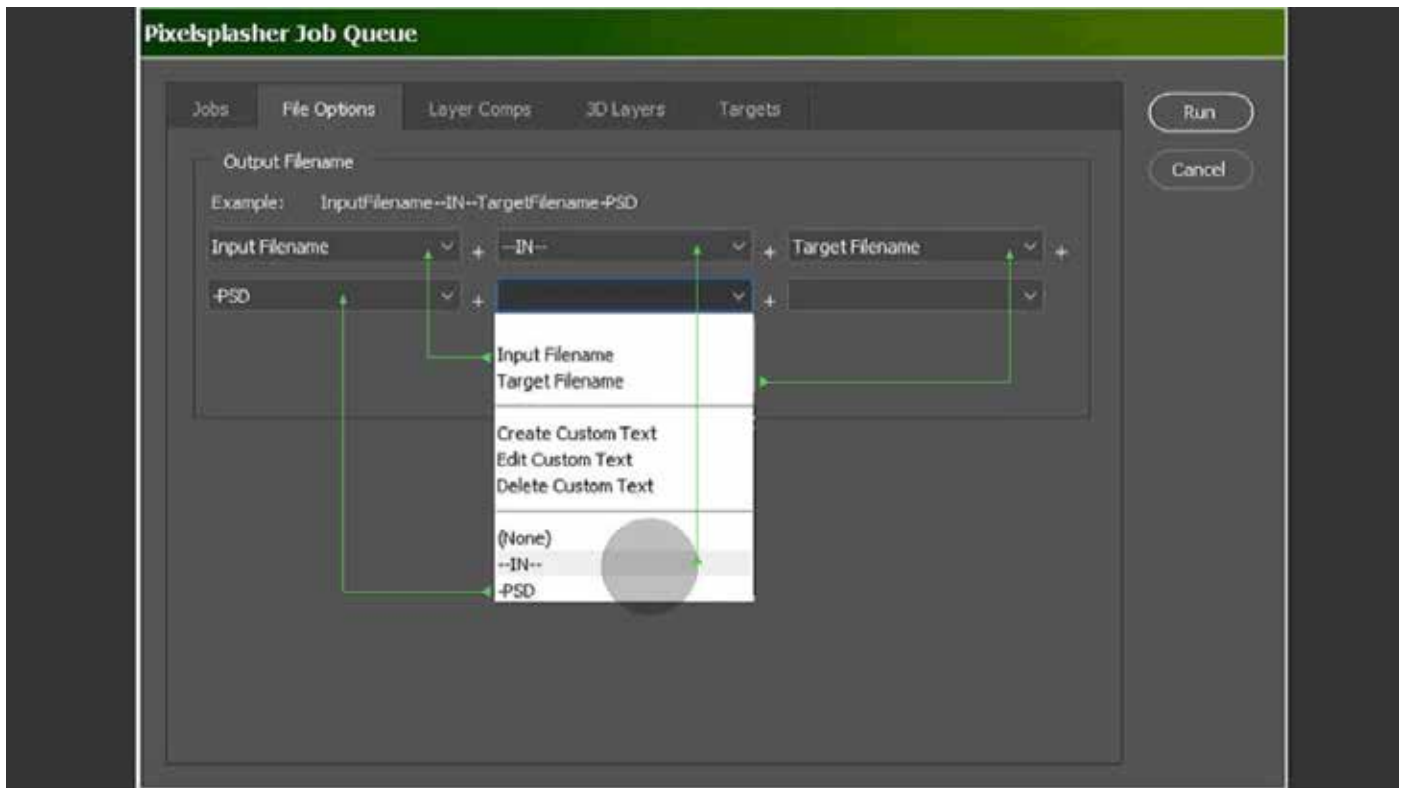


Layer Comps Add-On

\$7/P\$5

Although you are able to export all layer comps as an option in the Job Queue add-on, Layer Comps gives you the option to select which layer comps to include for export in addition to the currently selected layer comp.

Layer Comps demo: <https://www.youtube.com/watch?v=e89VYIdPSVo>



File Options Add-On

\$7/P\$5

File Options add-on gives you the ability to customize the filenames of the exported files according to the format that you specify. This can be based on custom text, target PSD filename and the document filename. File Options add-on is open to suggestions by its users and you can request for a filename format option to be added that may be useful to other users. Up to six filename format segments can be stringed together.

In future free updates, this add-on will be further developed to include file quality options.

File Options add-on demo: <https://www.youtube.com/watch?v=6aXcEhLAHvM>

How To Purchase

Prices may be slightly higher at [Adobe Exchange](#) to cover the cost of services by Adobe and Fast Spring.

You can purchase add-ons directly from Pixelsplasher by sending payments to Paypal at <https://www.paypal.me/pixelsplasher> and mentioning the add-on name and the Google Drive email address to share it to.

Send payment of \$1 less per item by buying more than one item with  PayPal.me.

Customer Support

Facebook: <https://www.facebook.com/PixelsplasherDotCom/>

LinkedIn: <https://www.linkedin.com/company/pixelsplasher/>

Email: webmaster@pixelsplasher.com

Contact Pixelsplasher if you need help making the script work according to your needs. You may be asked to submit your PSD file and input file. Most installation issues can be solved by getting the zip version instead of zxp from the author provided you have the Adobe Exchange invoice number as proof of purchase.

You may also request certain features that other customers may want to use. A major feature may be added as a separate add on script to be sold separately.

Tutorial videos are available at the Pixelsplasher YouTube channel: <https://www.youtube.com/Pixelsplasher>

Updates

All users are entitled to free updates up to one year since date of purchase. If you have purchased the script at Adobe Exchange, you can manually download applicable updates at: <https://exchange.adobe.com/creativecloud.partner.0011O00002DWKV7QAP.html>. Add-ons purchased at Adobe Exchange are subscription-based and may need to be renewed to continue getting newer version updates after one year since date of purchase.

If you have received the script via Google Drive, you can revisit the file link to check for new versions and download it. You should be able to see the file in your Google Drive folder as a shared file. Take note of the date modified in order to see if it has been updated.

You may also receive update notifications in your email.