

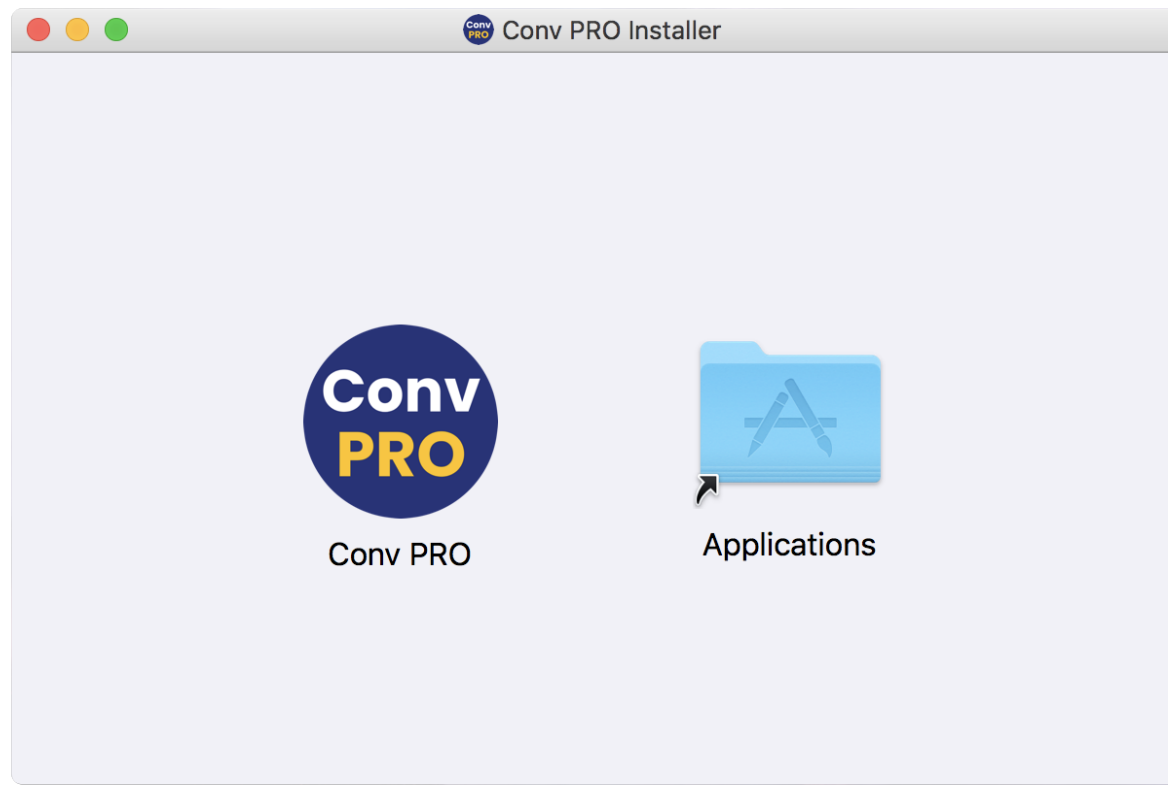
INSTALLATION AND USE GUIDE

How to install

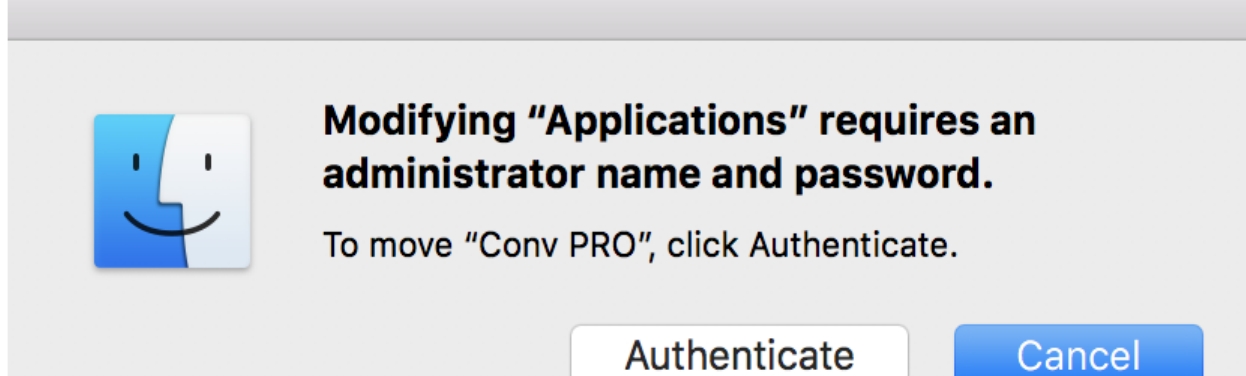
Hi! Thank you for choosing Conv PRO!

Installation on Mac OS

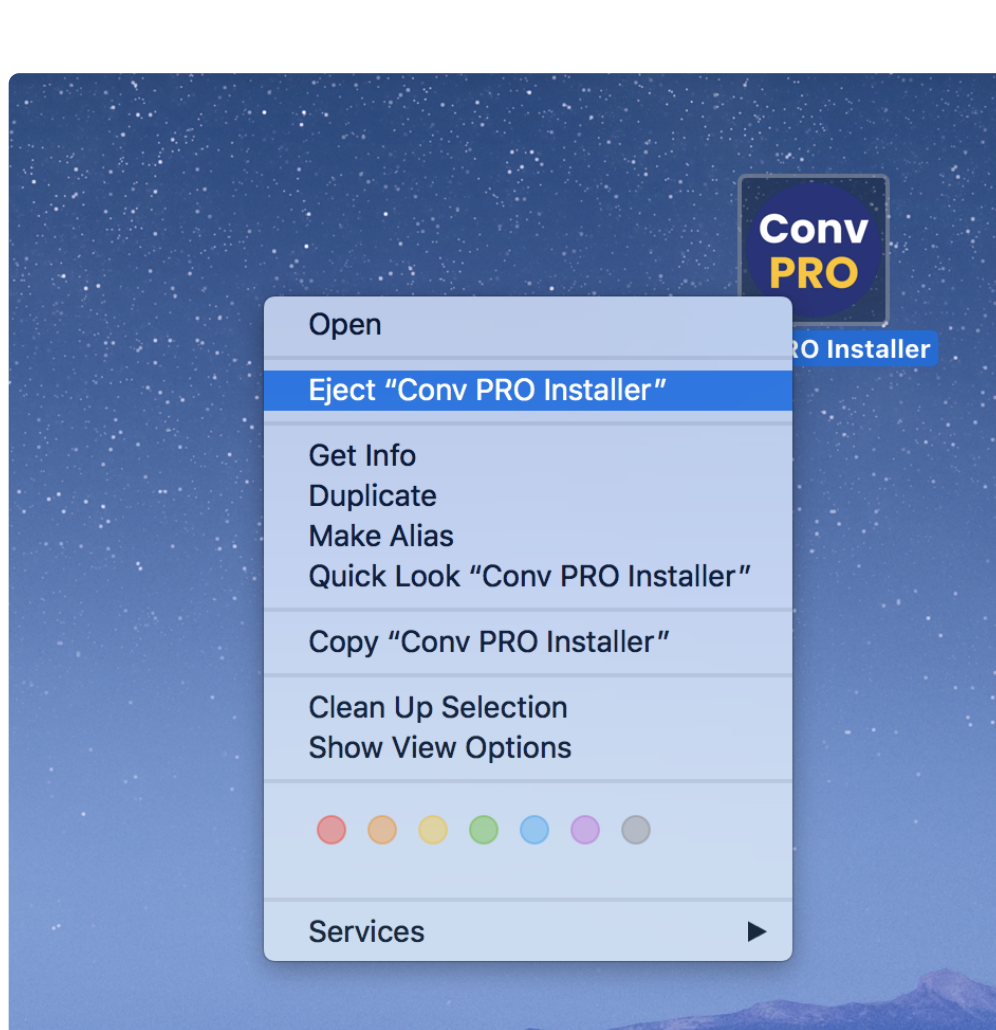
Double click on Conv PRO-Installer.dmg. The installer will start. Move the shortcut to the Applications folder:



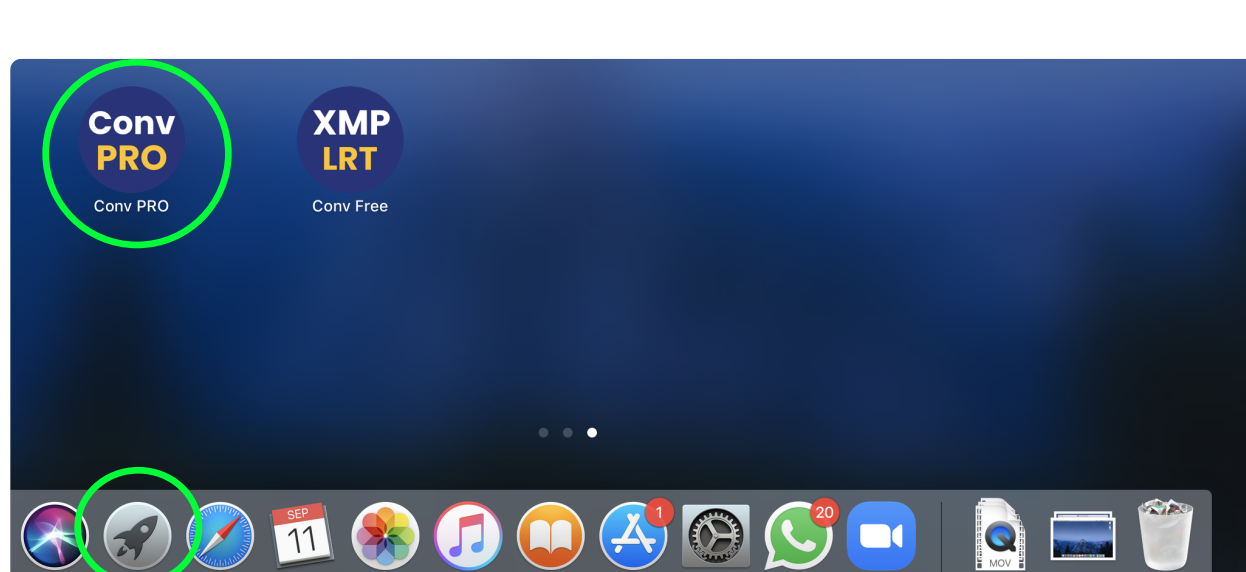
If you are not working under an administrator account, you may need to enter his username and password:



If everything has been copied — excellent! Now, extract the virtual disk of the installer to clean up your desktop:

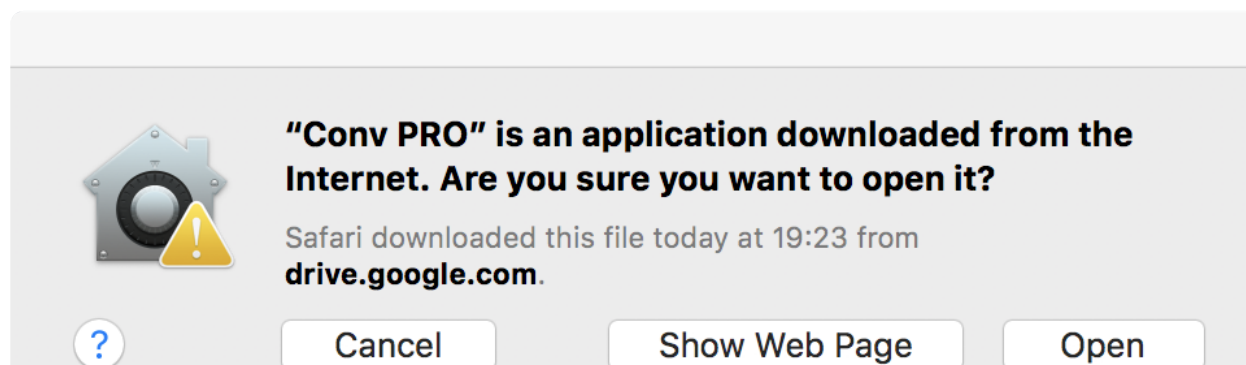


Now go to Launch and click on the Conv PRO shortcut:

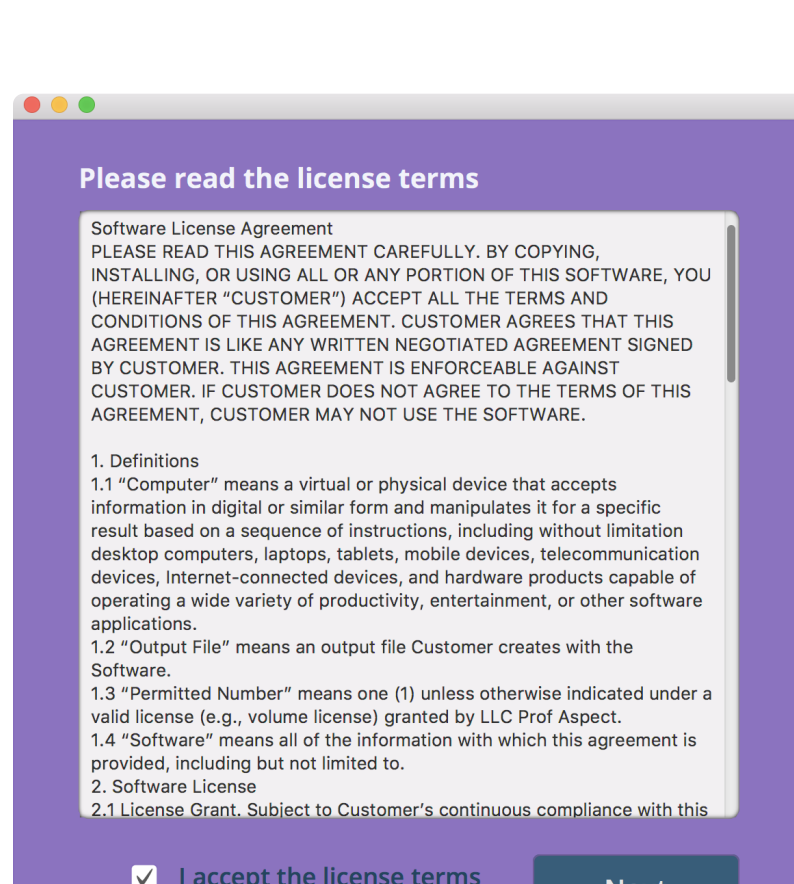


When you start the program, the following window will appear:

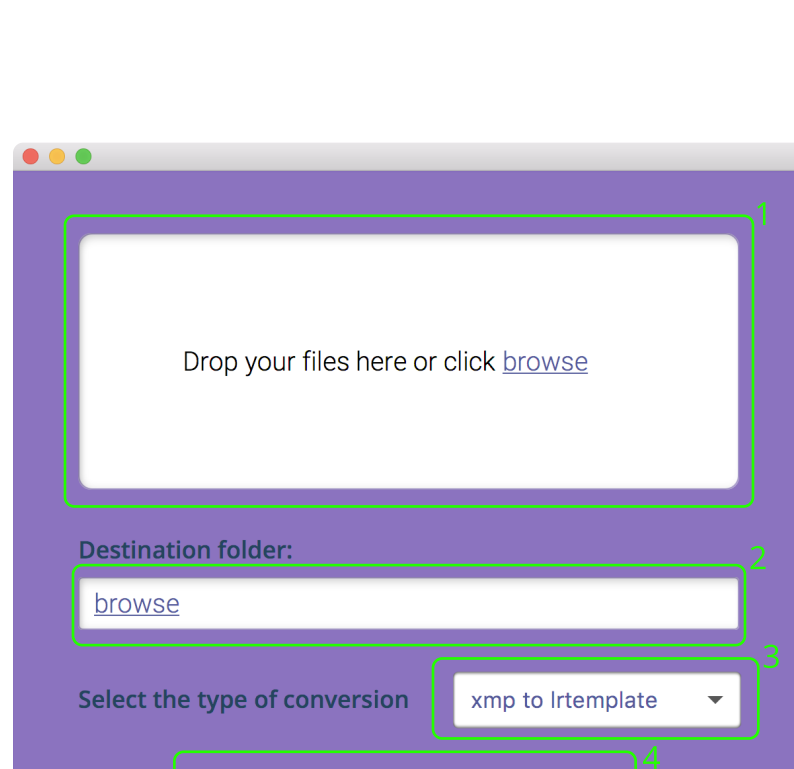
Click Open.



Then you need to accept license terms. Read it, check the box and click Next.



How to use

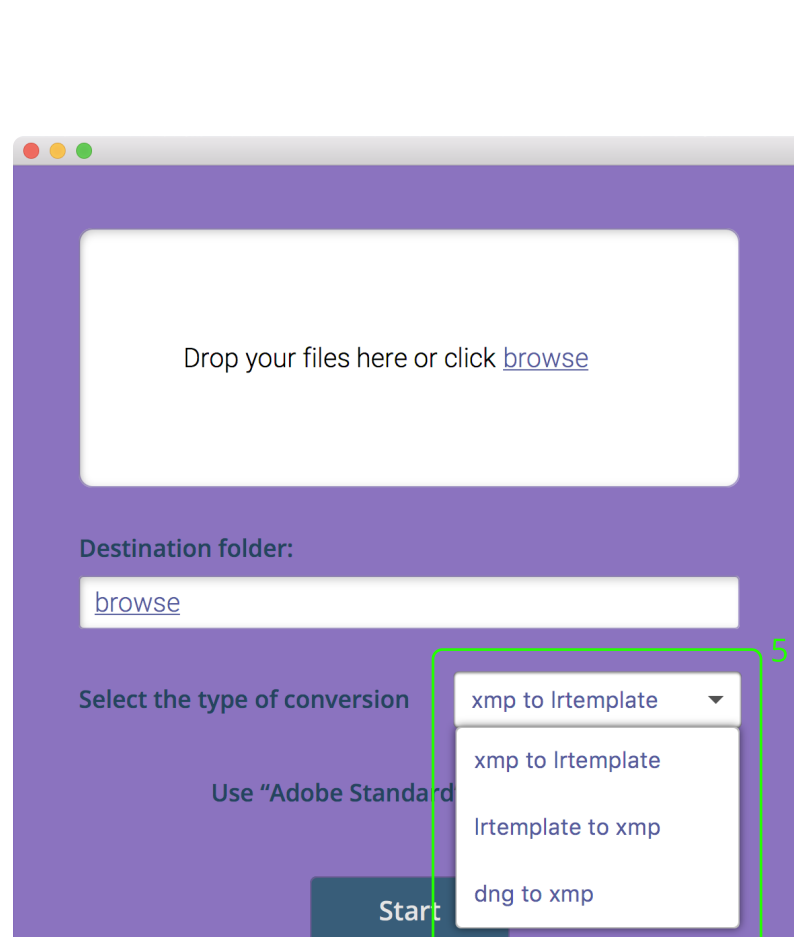


1. Drop-area. You can drop individual files, groups of files and folders containing files here. But attention should be paid to the following: if you drop a folder, the program does not enter the sub-folder, and takes files only from the root of the folder.

2. Here you must select the folder into which the program will upload the converted files.

3. The type of conversion is shown here. If you open this drop-down list, you will see what types of conversions are available.

4. Your Lightroom may have a camera profile with a name that is not recognized by older versions of Lightroom. To solve the problem, convert with the «Use» Adobe Standard «profile» checkbox. In this case, the built-in camera profile is replaced by the «Adobe Standard» profile.



5. If you want to change the type of conversion, open this window.

In Conv PRO you can convert from DNG to XMP, as well as from XMP to LRTEMPLATE and vice versa.

If you have any questions, be sure to write to us by mail:

support@xmp-lrt.com

Best regards,

Conv Team